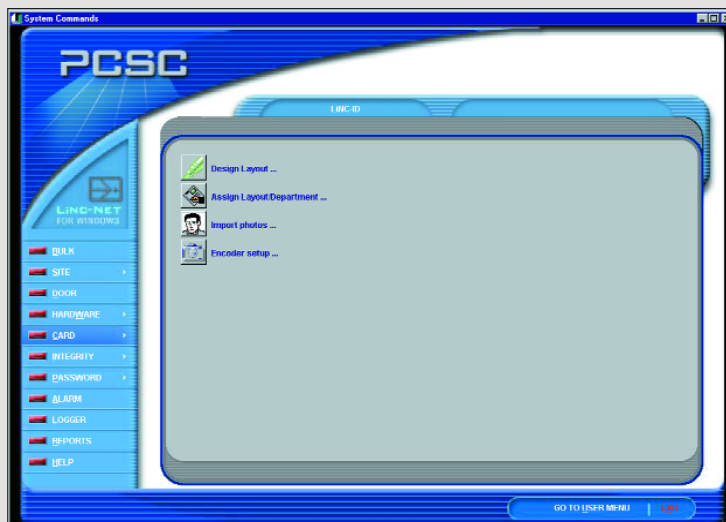


# LINC-NET FOR WINDOWS

## INTEGRATED ACCESS CONTROL MANAGEMENT SOFTWARE A SMARTER WAY TO INTEGRATE

# PCSC



LiNC-NET® for Windows® is a fully integrated access control, alarm monitoring, CCTV and video badging system.

Built to operate on the standard Windows 2000 and Windows NT 4.0 platforms, the LiNC-NET® system utilizes an ODBC compliant relational database to provide rapid processing of transactions and information requests.

The LiNC-NET system is built around a simple philosophy – as new capabilities are added to the software they become standard parts of each subsequent software release. Fewer options mean a more maintainable system for PCSC and that means more features and reliability for you.

You will find many features that are standard in the LiNC-NET system which are either unavailable or extra cost options on other systems.

### ACCESS CONTROL

LiNC-NET for Windows provides support for multiple card technologies including Wiegand, proximity, magnetic stripe, bar code, biometric and PCSC's own ProTech.

A comprehensive set of standard features make up the access control module including:

- Multi-page personnel records
- 999 access privileges
- 999 time periods
- 365 holidays
- 99 affiliations
- Daylight Savings time change
- Card activation flagging
- Automatic card expiration
- Bulk card activation and deactivation of cards
- User-defined or system selected PIN codes
- Extended access times for ADA applications
- Last badge location
- Optional photo trace

### PROGRAMMABLE LOGIC

The LiNC-NET system utilizes User Programmable Logic (UPL) to provide sophisticated control over inputs and outputs.

Any input may be used to count or turn on one or multiple outputs. Cards and card groups may also be used as counters to turn on outputs. For example, when

cardholders card out of an area and the population of an area equals zero, the lights and HVAC may be deactivated.

### FEATURES

- Support for up to 40,000 card readers and 65,000 cardholders
- 256,000 Inputs & 128,000 Outputs
- RS-232, RS-485, TCP/IP and Dial-up communications
- Multiple password and program security levels
- User definable SQL report creation on NT systems
- Fully integrated video badging
- High security 2-person rule, escort and multi-level entry/exit controls
- Optional graphical alarm monitoring, and CCTV control and video event recording
- Compatible with Micro®ELV, IQ™ Series, SIM™ Series and Ultimate™ Series controllers
- Compatible with Windows® 2000 and Windows® NT 4.0

# SPECIFICATIONS

## REPORTING

In the LiNC-NET system, real-time transactions received from controllers are stored for later retrieval.

Transactions are stored in an industry standard database. They may be accessed by using any of the numerous factory defined reports or may be accessed using the standard SQL custom report generator. Custom reports may be saved for later use.

## HIGH SECURITY

Seldom available except on high end security management systems, the LiNC-NET system boasts a full suite of high security functionality.

Five state alarm supervision, two person minimum occupancy rule, escort required access control, visitor control, and needed antipassback are just some of the standard features.

## ELEVATOR CONTROL

LiNC-NET systems provide full, floor selective elevator control of up to 64 floors. The system is capable of individual floor overrides by time and cardholder. There is built-in support for dial-up operation. History reports on which floor individual selected.

## ALARM MONITORING

A full featured alarm handling module is standard in the LiNC-NET system.

Real-time monitoring is provided by scrolling event display, with operator instructions and response areas for each event requiring intervention.

An optional comprehensive graphic map display module is also available.

## PARKING CONTROL

LiNC-NET systems feature flexible parking controls which normally would be expensive options on other systems.

Standard features include: automatic card expiration; car counting and "Lot Full" indication and control, plus anti-passback with allowances for parkers who may have left the parking area without carding out.

## LINC-ID VIDEO BADGING

Available as an option, LiNC-NET's integrated video badging uses a single database to store images, personnel and system data.

Users may define badge layouts with transparent overlays, knocked-out photos, edge to edge card designs, and other custom features. Flash or fixed lighting and high volume printers are also available.

## LINC-VIEW CCTV CONTROL

LiNC-VIEW provides control over your CCTV matrix switching system.

Full control of manual camera call-up, pan/tilt/zoom functions, alarm generated camera call-up and other switching functions is provided.

All of these capabilities are available within the LiNC-NET system including live on-screen video.

## SYSTEM REQUIREMENTS

The following minimum requirements are subject to change based on final system configuration.

Windows 2000/NT 4.0 Service Pack 5  
650MHz Pentium, 1128Mb for Host/Concentrator/Workstation, 256MB RAM for LiNC-ID

10.0 GB of disk space for Host/Concentrator/Workstation, 20 GB for LiNC-ID

PS2-button bus mouse, SVGA color monitor 1024 x 768 true color (600 x 800 min)

8X CD ROM, 1 serial and 1 parallel port.

Configurations subject to PCSC approval.